

IMPORTANT:

ALL CIRCUIT VOLTAGES WERE OBTAINED WITH A 20,000 Ω /V VOM. ALL READINGS ARE IN VOLTS.

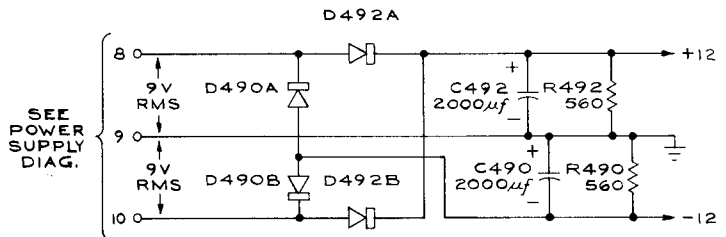
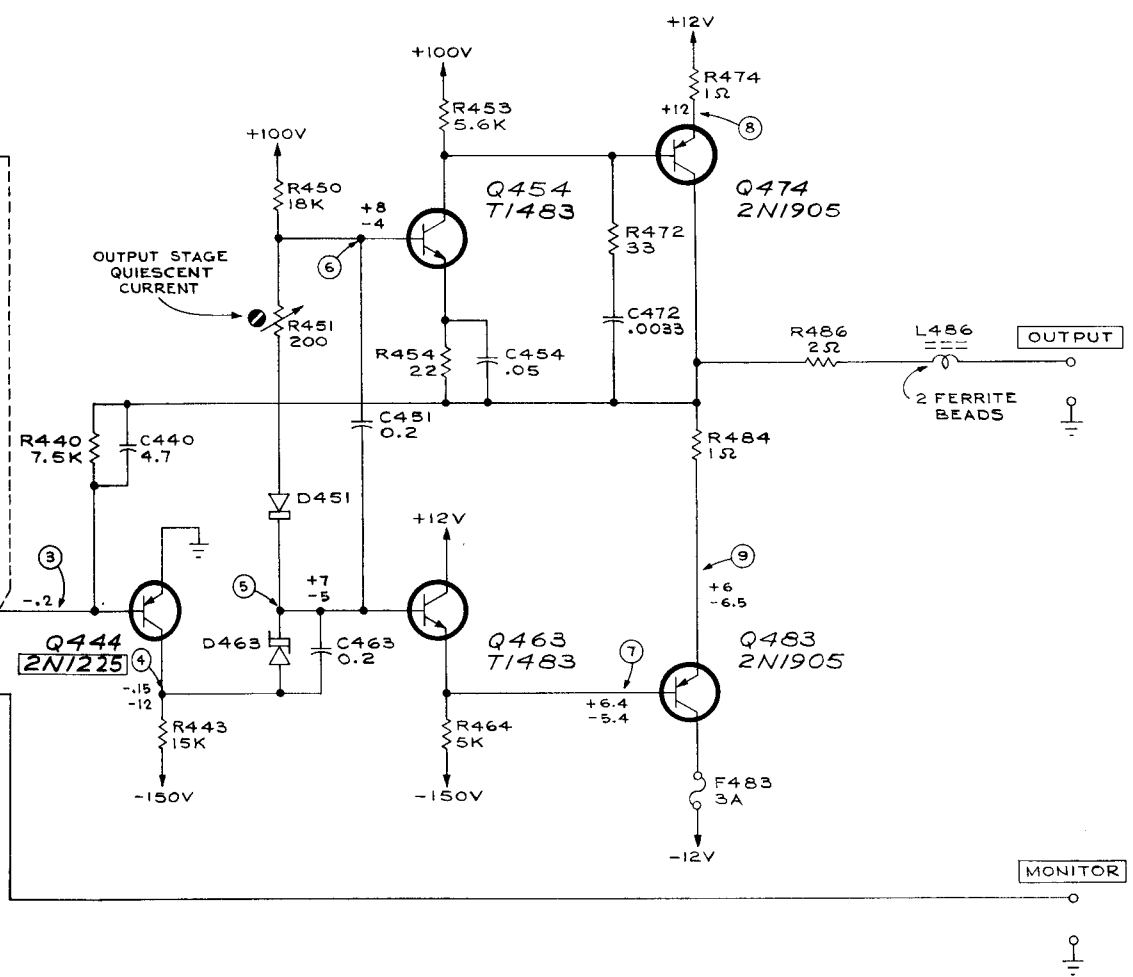
VOLTAGE & WAVEFORM AMPLITUDE MEASUREMENTS ARE NOT ABSOLUTE. THEY MAY VARY BETWEEN INSTRUMENTS AS WELL AS WITHIN THE INSTRUMENT ITSELF DUE TO NORMAL MANUFACTURING TOLERANCES, TRANSISTOR, AND VACUUM TUBE CHARACTERISTICS.

TYPE 133

A 4

+

133



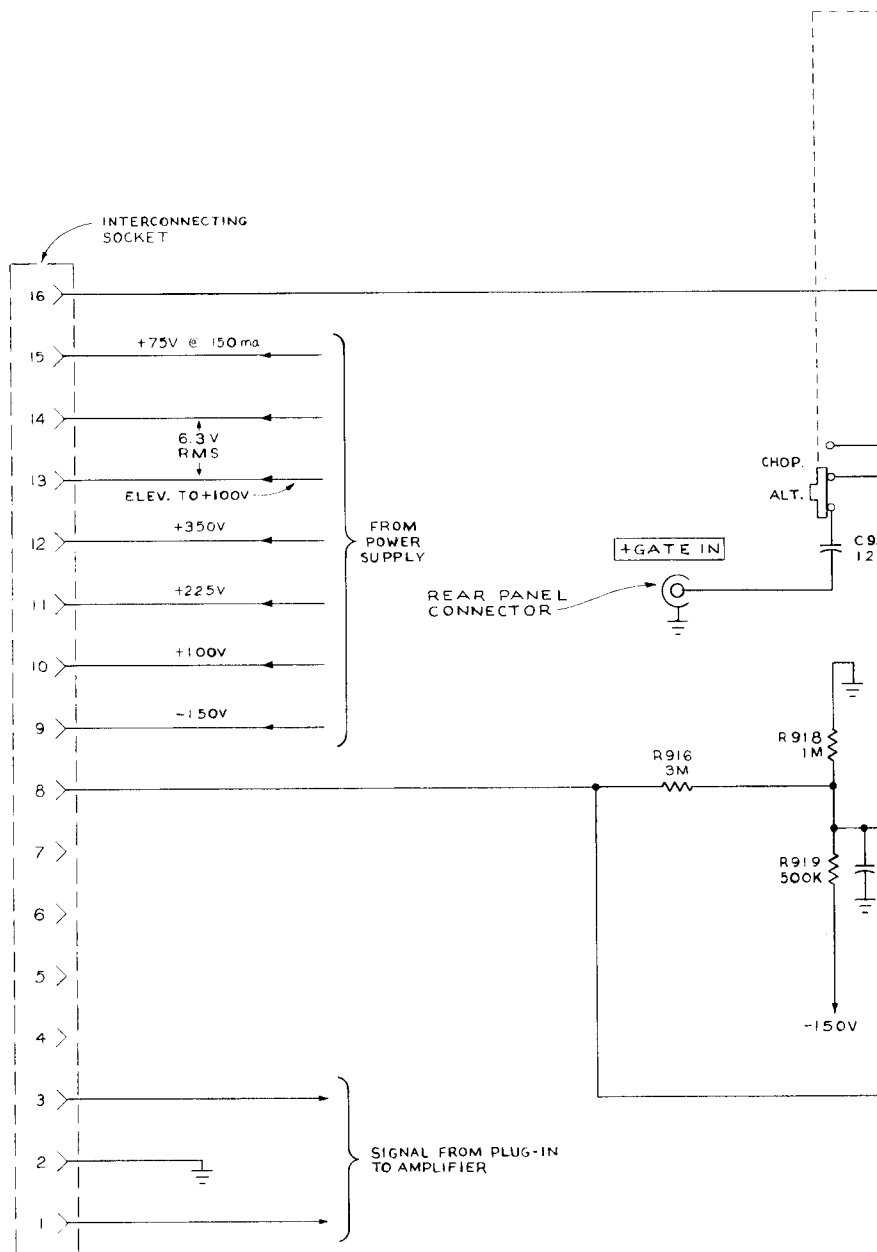
VOLTAGE READINGS TAKEN UNDER THE FOLLOWING CONDITIONS:
 LINE VOLTAGE 117 VAC
 PLUG-IN UNIT TYPE CA
 PLUG-IN POSITION CONTROL FOR UPPER READINGS CW
 FOR LOWER READINGS CCW
 PLUG-IN INV.-NORM. SWITCH NORM.
 133 INV.-NORM. SWITCH NORM.

SEE PARTS LIST FOR EARLIER VALUES AND S/N CHANGES OF PARTS MARKED WITH BLUE OUTLINE

MR4
 2-7-62
 AMPLIFIER
 CIRCUIT NUMBERS
 401 THRU 499

ALTERNATE TRACE SYNC PULSE TO SWITCHING CIRCUIT IN MULTI-TRACE PLUG-IN UNIT

TO GROUND POINT IN MULTI-TRACE PLUG-IN UNIT (ALT.-TRACE MODE ONLY)

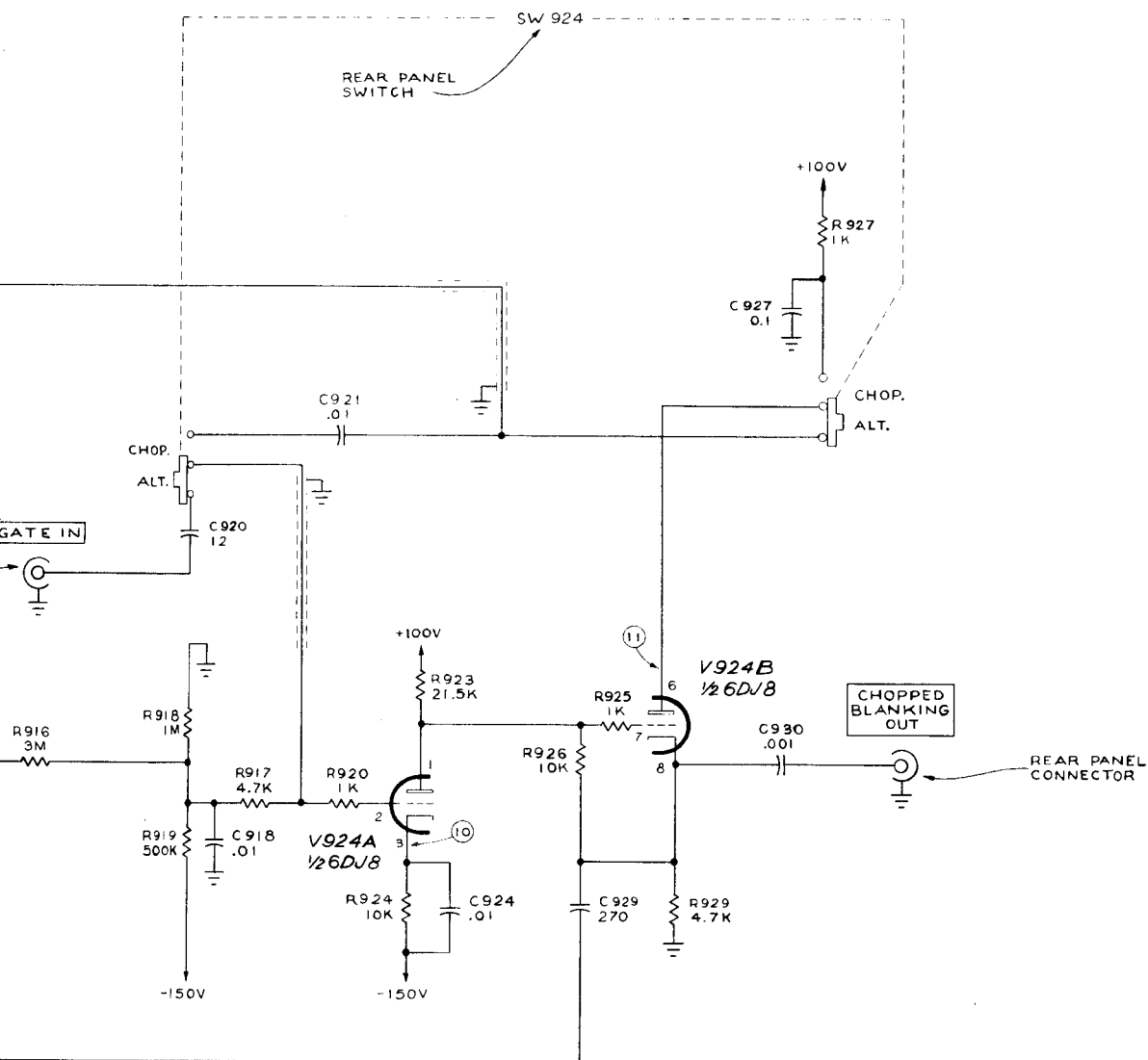


TYPE 133

A₁

+

+



JN
10 18-61

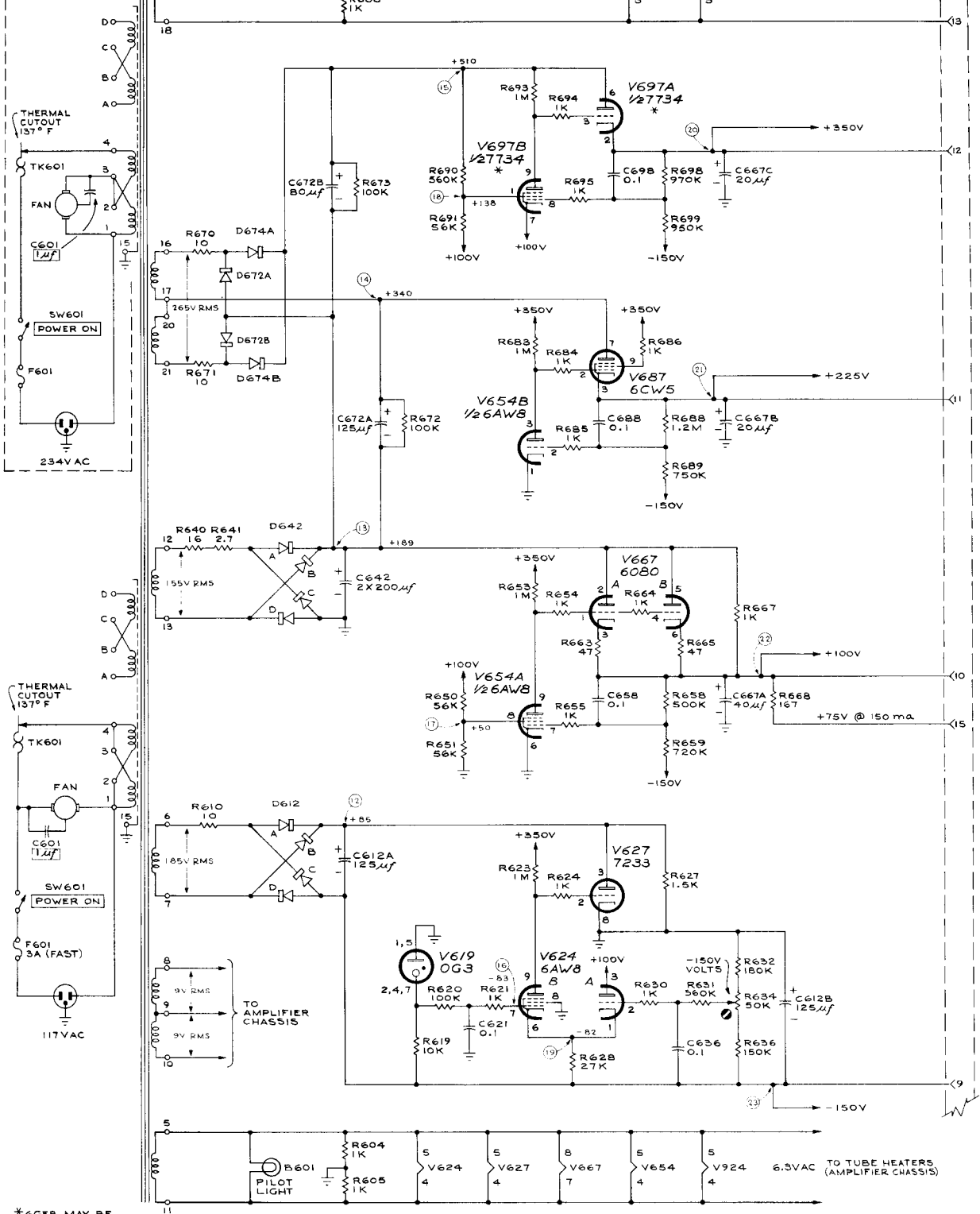
PLUG-IN CONNECTOR & MULTI-TRACE SYNC

CIRCUIT NUMBERS
916 THRU 929

A₁

PRIMARIES CONNECTED FOR 234-V OPERATION

INTERCONNECTING SOCKET. FOR ADDITIONAL DETAILS SEE (PLUG-IN CONNECTOR DIAG.)



*66E8 MAY BE SUBSTITUTED FOR 7734

VOLTAGE READINGS TAKEN UNDER THE FOLLOWING CONDITIONS:
 LINE VOLTAGE 117 VAC
 PLUG-IN UNIT TYPE CA
 INPUT SIGNAL NONE
 ALSO SEE NOTE ON AMPLIFIER DIAG.

SEE PART LIST FOR EARLIER VALUES AND % CHANGES OF VALUES MARKED WITH BLUE OUTLINE

MR4
864

POWER SUPPLY

CIRCUIT NUMBERS 601 THRU 699

TYPE 132/133

PARTS LIST CORRECTION

REMOVE:

C918	283-0002-00	0.01 μ F	500 V
R917	302-0472-00	4.7 k Ω	1/2 W 10%

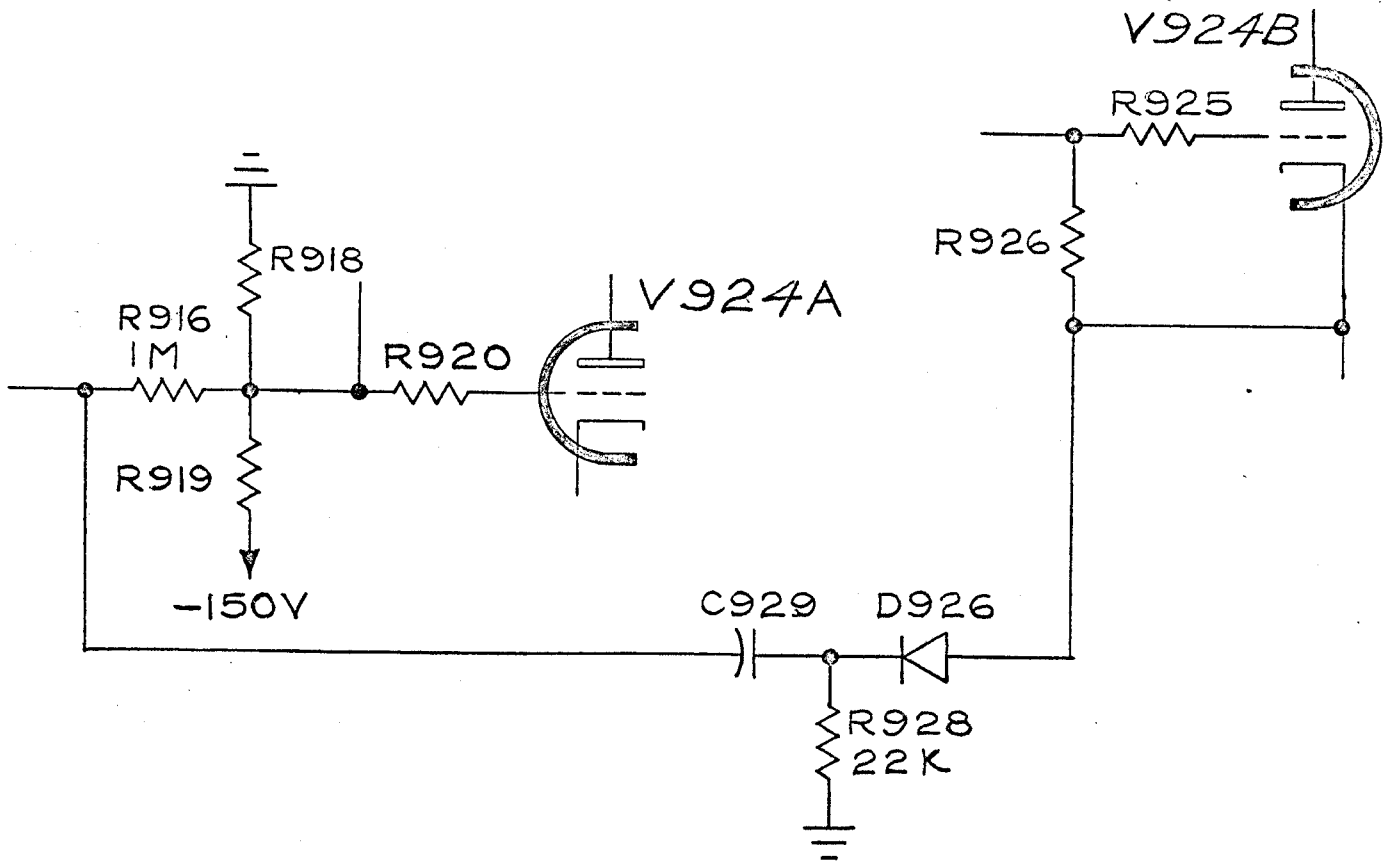
ADD:

D926	152-0185-00		Diode, 6185
R928	302-0223-00	22 k Ω	1/2 W 10%

CHANGE TO:

C920	281-0542-00	18 pF	500 V 10%
R916	301-0105-00	1 M Ω	1/2 W 5%

SCHEMATIC CORRECTION



PART MULTI - TRACE SYNC

TYPE 133 -- TENT. S/N 610

PARTS LIST CORRECTION

CHANGE TO:

Q474	151-137	2N2148
Q483	151-137	2N2148